

The  
*Communicator*

May 2025 Vol. 44 Issue 5

Connecting People



Collegiate United Methodist Church  
and Wesley Foundation  
Ames, Iowa

## Contact Us

Phone: 515-292-6936

Email: [mail@cwames.org](mailto:mail@cwames.org)

For more information, please visit our website: [cwames.org](http://cwames.org)

Facebook: [facebook.com/cwames](https://facebook.com/cwames)

## Weekly Email Announcement Deadline:

Send Weekly Email submissions to [mail@cwames.org](mailto:mail@cwames.org) by NOON on Wednesday. Type *weekly email* in the subject line.

## Cover Pictures:

Taken just after Easter.



Have you been in the courtyard recently?

## Inside This Issue:

A Message from Pastor Lee	3
Worship in May / Livestreamed Worship / Ways to Give	4
C/W To Welcome Pastor Jena	5
Children, Youth And Family Ministries	6
Pictures from April Activities	7
Trustees Work Day / Rainbow Faith Coalition	8
Iowa Annual Conference / Byrne Endowment	9
Byrne Fund Recipient Report	10
Site Analysis Update / Patio Party & Concert	12
Wesley Center News	13
Our Prayers / Upcoming Funeral Services	14
Volunteer Opportunities & Donations Requested	15
Sending to Serve	16
AMOS—When a Dream Lives	17

## About *The Communicator* and deadline submission dates —

The *Communicator* is a monthly publication of Collegiate United Methodist Church and Wesley Foundation. The goal of *The Communicator* is to inform and involve people in the life and work of the church. To submit articles, please email them to [mail@cwames.org](mailto:mail@cwames.org) and put “*Communicator*” in the subject line. If you have any questions, feel free to contact the church office at 515-292-6936.

June 2025 Communicator Deadline: May 19, 2025

# Message from Pastor Lee

by Rev. Lee Roorda Schott

May 2025

Dear Collegiate/Wesley friends,

Ten months into knowing you, I've learned a lot of names as I've worked and served with so many wonderful people here at the church and in this community. I started out working really hard to get acquainted, and you helped me with nametags and reminders ("I'm the one who..." or "We met at...") and you offered a great deal of friendly patience.

But as we approach the one-year mark of me serving as your pastor, I have a confession to make. *I still don't know a lot of your names!* If you aren't serving on a committee or group that I attend, or if we haven't been in at least a couple of conversations together, I very likely don't know your name.

You know how you can tell? If I don't say your name when I greet you, *I don't know your name!* If I serve you the bread during Holy Communion and you see me glancing at your nametag, *I don't know your name*—or at least I'm not sure enough not to sneak a look.

So, true confession: If I know your name, I will almost always greet you by name. If I smile and say, "Good morning" and start talking about the weather, it probably means I'm really saying, "Good morning,...*You!*"

And I'm determined to do better.

(I might point out that I'm pretty sure this pattern characterizes many of us. I know most of you, too, look around at rooms here that hold people whose names you can't quite come up with.)

Starting immediately, I'm declaring Collegiate/Wesley a NAME SHAME FREE ZONE. Church needs to be a space where we can ask for and (eventually!) learn one another's names. It's a place to grow in connections among grown-ups, and across generations. To that end, I'm going to be more honest, and ask you to help me make connections I can remember about your names, your kids (or your grown-ups!), your interests, and the ways you serve. Connecting to even a sliver of your back story can help—where you're from, what's your specialty (whether professorial, culinary, or otherwise), the thing you're most excited about right now. I might ask those questions, and you can help me by volunteering those bits about who you are.

Let's give each other a *free pass on the shame* that can accompany our admitting that we can't remember! Whether it's because we never bothered or we've become forgetful, let's help each other be people who seek to know one another, even if we have to ask a second, a ninth, a twentieth time. **Knowing one another's names is a first step to loving** one another, which, after all, is at the center of our job description as followers of Jesus Christ.

Loving God and loving one another. That's who I want to be, with...er..." *now what was your name again?*" No shame in this, my friends. Not one bit of shame.

Peace,

Pastor Lee





# What's Coming in Worship

Series: *Promised Even Now*

May 4 – June 8

This spring, we're stepping into a season of renewal and holy anticipation focused around the phrase **"Promised Even Now."** From May 4 through Pentecost Sunday on June 8, we'll be tracing the movement of the Holy Spirit and the bold promises of God that continue to shape us today.

The early Church was formed not by certainty, but by faith in a Spirit that moved through doubts, division, and unexpected places. Each week, we'll explore how those same promises reach across time and circumstance—speaking hope, purpose, and connection into our lives **even now**.

We'll talk about the Spirit that comforts and challenges us, the gifts God gives to build beloved community, and what it means to belong in a Church born not from perfection, but from a promise. Together we will long for Pentecost Sunday (June 8th), where we'll celebrate the arrival of the Spirit—and remember that God is still showing up with power and possibility.

The Spirit has been promised. The Spirit is already moving. Come and see what God is doing—even now.

Also coming in worship:      May 11—honoring our College Graduate  
May 18—honoring our High School Graduates and Teacher Appreciation

## Livestreamed Worship

Helpful links for watching our worship services:

- For our livestreamed worship, you can "tune in" on our [Facebook page](#) at 10:00 am to watch live.
- You can also view the service on our [Youtube channel](#) or [Digital Worship Page](#).
- Whichever way you worship, we would love for you to fill out the [check-in form](#) on our website so we can do our best to stay connected. You can also share your prayer requests and give at the same link.

## Text-To-Give

**Text-to-give:** Using your smartphone, simply text the amount you want to give to 84321. You will receive a text message that helps you through the process of identifying Collegiate/Wesley as the church to whom you would like to give, logging into your profile, adding or selecting a payment method, and submitting a donation. After the **initial setup**, next time you want to donate it's as easy as texting the amount you want to give to 84321.



# Collegiate Wesley to Welcome Pastor Jena!

You may remember that a couple of months ago we learned that associate Pastor and Campus Minister, Lewis Cox, would be leaving us this summer to become a chaplaincy resident at Iowa Methodist Medical Center in Des Moines.

We recently shared the announcement that our Bishop and her Cabinet have appointed Reverend Jena Finch-Manchester as our Associate Pastor and Campus Minister, effective July 1, 2025. Pastor Jena is an Elder in the Iowa United Methodist conference, and she will be taking the role Pastor Lewis has had, as he becomes an ordained elder this June and we bid him farewell.



Pastor Jena has served United Methodist Churches of various sizes and **communities since 2005. We are excited for Pastor Jena's** strengths and experience in programming, community outreach, and leading young adults in their faith journey. These strengths and experiences will be valuable in continuing to build upon our campus ministry and overall church goals.

We are invited to continue praying for our Bishop and Her Cabinet, Pastor Jena, Pastor Lewis, Pastor Lee, our staff, our leaders, our members, the Story City Grace UMC, and Collegiate/Wesley during this time of transition.

**Here's what Jena wants us to know! (It's pronounced "Jee-na," by the way.)**

Jena is currently appointed to Grace UMC in Story City and in her 20<sup>th</sup> year of ministry. She recently began leading a Bible study for college students--whom she had taught during their high school years when she was serving in Fort Dodge! She's meeting with them right here at Collegiate/Wesley, in our student lounge, with topics they've asked her to explore with them.

When Jena first heard about this opportunity, she wondered if she might be too old for the role—but with encouragement from others, she recognized what a great fit this really is. Jena brings a deep passion for building relationships, meeting people where they are, and sharing in meaningful conversations about faith, the Bible, and Jesus.

In her free time, you might find her at a coffee shop, walking around Ada Hayden, kayaking (she has an extra if anyone wants to join!), or cross-country skiing during the winter months.

**She's excited to get to know this community**—hearing your hopes and dreams, and helping you grow in your faith and understanding of scripture. Jena will be moving to Ames and will begin on July 1.

**And Pastor Lee gets the final word:**

I hope you'll all join me in welcoming Jena to our pastoral staff with real thanksgiving. Jena and I have been acquainted for many years, through an extended continuing ed experience we had together more than ten years ago, and through our paths crossing casually for the past two decades. It has been good to reconnect as part of the same circuit of local UM churches over the past year.

I'm delighted at the pastoral experience Jena will bring to Collegiate/Wesley. I am impressed with her heart for young people, outreach, missions, and evangelism, and her excitement to jump into the work of campus ministry through the Wesley Center. Alongside everything else, Jena will bring a steady hand to our worship and ministry in those times when I get pulled away in the coming months due to my husband's health.

I have seen the Holy Spirit at work in getting this appointment settled, and I believe we can all look toward a smooth transition this summer.

# Children, Youth and Family Ministries

by Lauren Loonsfoot, Director of Children, Youth & Families

## What's Coming Up in Children & Youth Ministries

Our current Sunday School rotation, *Women at the Well*, continues to inspire thoughtful conversations and spiritual growth. As we wrap up the program year, mark your calendars for **May 18th**—our final day of **Sunday School!** On that special Sunday, we'll also celebrate **High School Graduate Recognition** and show our gratitude during **Teacher Appreciation**. It will be a meaningful morning of reflection, recognition, and thanks for all who have contributed to a wonderful year in Children and Youth Ministries.

### Bake Sale Fundraiser – May 18th!

Join us *before and after worship* on **Sunday, May 18th** for a delicious bake sale supporting our **Elementary Service Trip!** Enjoy homemade treats and help our kids make a difference—all through a **free will donation**. Every sweet bite helps fund their journey of service and learning. See you there!



### VBS 2025!

We are excited to host vacation bible school this year Sunday, June 1st - Wednesday, June 4th from 5:30-7:30 pm with a free dinner at 5:00 pm. We welcome current preschoolers through 5th graders for a time of music, crafts, games, science, FUN and more. Come for one day or all four! You are welcome whenever you can be there.



We will also have an option for youth 6th-8th grade to participate in a service VBS. Each night there will be a different project for them to complete. Youth are also welcome to be volunteers if they would rather work with the younger participants. [Register here.](#) [Volunteer here.](#)





# Pictures from April Activities





## Trustees

by Doug Warren, Facilities Superintendent

The Board of Trustees will hold a Spring Spruce Up Day on **Saturday, May 17th, 9am until noon**. Come and help spruce up the church property! We will be divided into teams to tackle tasks such as:

- Clean bugs from light fixtures
- General trash pickup outdoors
- Clean wax from the candelabra (Sanctuary) and altar (Nichols Chapel)
- Organize the garage



RSVP now to share your interests and your hands! Contact me at [Doug@cwmes.org](mailto:Doug@cwmes.org) to get signed up! Many hands make light work!

## Rainbow Faith Coalition

### We've Joined the Rainbow Faith Coalition!

In early 2024 a group of LGBTQIA+ affirming congregations in the Des Moines area came together through the leadership of Capital City Pride and Interfaith Alliance of Iowa. That collaboration gave birth to the [The Rainbow Faith Coalition of Greater Des Moines](#), whose mission is to foster "relationships between LGBTQ affirming faith communities and [to collaborate] alongside the LGBTQ community as partners for justice and equality."



Pastor Lee was part of some early conversations, before her arrival here at Collegiate/Wesley, that led to the forming of this coalition. When commitments were solicited for churches who would be part of this group, she said "Yes" on our behalf, in keeping with our nearly 25-years-long commitment of support for LGBTQIA+ affirmation and welcome. Even though we're a bit outside of "Greater Des Moines," we're glad to be among [the congregations supporting this effort](#). No similar "affirming congregations of Ames" resource currently exists online (yet!), so this may help folks find us when they go looking for what we offer, alongside one additional Ames church that is part of this effort.



AND, take a look at [this event happening in Des Moines on Friday, May 9 at 7:00 pm](#), when the Rainbow Faith Coalition and Capital City Pride are hosting Flamy Grant, the award-winning drag queen and Christian music artist, as she takes the stage for a powerful performance blending gospel, folk, and storytelling. Pastor Lee got to see Flamy Grant in October 2023 at the start of a progressive Christian music conference! It was a great performance.

This FREE community concert is a celebration of authenticity and radical love. Whether you come

**for the music, the message, or the community, you'll leave inspired by Flamy's soulful voice, heartfelt lyrics, and unwavering commitment to inclusion.** This event is open to all—people of every faith (or none), LGBTQ+ individuals, allies, and anyone seeking a night of joy, hope, and affirmation.



# Iowa Annual Conference



## May 4 Forum: Important Votes at Our Upcoming UM Annual Conference

If you've followed the United Methodist Church's path toward greater openness and inclusion, you may know that the good work initiated in our international UMC gathering a year ago--the 2020/24 General Conference--is on the ballot at the Iowa UMC's annual conference, which happens in June. Because the changes in our UM *Discipline* require constitutional amendments, every annual conference will take up these matters, and passage requires a 2/3 vote of the aggregate number of all votes cast in all our worldwide conferences.

Our pastors and some of our laypersons who represent Collegiate/Wesley at annual conference will be sharing about all this at our Forum class on **Sunday, May 4** at 9:00 a.m. in the Norman Room. We'll also share about a few other votes that will be before us at annual conference--including celebrating our own Lewis Cox who is on track to be ordained there on Sunday, June 15.

If you'd like to learn more about all this, ahead of or alongside the Forum Class, take a look at the conference's [website which has all kinds of details](#) about this annual meeting, or you can go straight to [the constitutional amendment page at this link](#).

## Byrne Endowment Grants

The Dennis Byrne Endowment Fund is a generous endowment from former member Dennis Byrne to be used for international missions and mission programs sponsored by Collegiate United Methodist Church/Wesley Foundation. This year we are pleased to award grants to five different organizations.



- United Mission to Nepal: Providing medical rehabilitation to children with physical disabilities. **The project's core focus is on enabling these children to become able to** do their activities of daily living independently by correcting deformities and enhancing their physical abilities through medical rehabilitation.
- Nabilala Community Development Programme in Uganda: Distribution of heifers to poor rural women and youth. The project helps fight poverty by selling milk to help pay for basic needs. Additionally, the milk will provide nutrition to the family members, and the cow dung will be used as manure in gardens. (Read additional information on the next page.)
- The Iowa Migrant Movement for Justice (formerly Justice for Our Neighbors): Helping sustain the Story County office which provides low-cost immigrant law expertise.
- The Ames Sanctuary Interfaith Partners (ASIP): Pay for the fee that the US government charges DACA (Deferred Action for Childhood Arrivals) applicants to register or renew their application for a temporary legal reprieve from deportation.
- CROP Walk: Combating hunger locally and internationally. Funds are distributed to the Church World Service as well as local food distribution centers, including eight centers located in Central Iowa.

# Byrne Fund Recipient Report– Nabilala Community Development

## NABILALA COMMUNITY DEVELOPMENT PROGRAM HEIFER PROJECT REPORT 2025

Nabilala Community development program received a grant of \$17000 from Byrne Endowment fund of Collegiate United Methodist Church on 30th August, 2024 to implement a heifer project at Kawete village in Namungalwe sub county, Iganga District. The project has benefitted both women and youth.

15 beneficiaries received heifers as the first beneficiaries. When the heifer produces, each beneficiary is obliged to pass a gift of a calf to another member in the village so that the project covers a big number of beneficiaries. This trend will continue in this village until a big number of people are covered.

15 beneficiaries were trained in heifer management by a veterinary doctor for a period of one (1) week. The farmers/beneficiaries acquired skills and knowledge in modern Agriculture by learning to use cow dung as manure in their garden soils so as to benefit by increasing their harvests due to fertile soils. The implementation of this program, has had multiplier effects whereby its benefiting the beneficiaries on so many fronts.

Some heifers have produced and the farmers/beneficiaries are selling milk in order to meet the basic needs of the family such as buying salt, soap, school fees and meet medical expenses.

The population of Uganda is 44.3 millions. 76% of the population lives in rural areas and 73% of the workforce is employed in agriculture. 41% of the people live on less than \$1.90 a day. 33% of the people have an account at a financial institution. In Uganda, nearly 50% of the children do not complete primary school and majority of the families rely on agriculture for their livelihoods. These ongoing challenges coupled with extremely large youth population and the largest refugee population in Africa creates a great need for both education and job opportunities.

The beneficiaries of the heifer project through Nabila Community Development Program appreciate the Christian Love of the people of Byrne Endowment fund of Collegiate United Methodist Church. The causes of poverty in Uganda include slow growth in agriculture and industrial sector, low productivity growth in agriculture, poor mediation of capital by capital markets and the primary dominance over industrial products.

What causes Poverty in Uganda?

- a) Lack of access to clean water and nutritious food
- b) Lack of basic health care
- c) Inequality of social injustice
- d) Conflict and instability
- e) Lack of education
- f) Lack of access to jobs and livelihoods
- g) Poor basic infrastructure
- h) Climate change
- i) Lack of government support
- j) Lack of personal safety nets

Nabilala Community development program is tackling number six, which is lack of access to jobs and livelihood.. Therefore, when we give out heifers to poor women and youth in the rural areas, we empower them to come out of poverty as they are able to sell the milk to meet basic needs.



Nabilala Community Development program through Namunkanaga Children Health Centre is solving number 2, which addresses lack of basic health care in the rural areas. The major problem of not tackling all other areas is lack of funds.

DOROTHY NAMUSUBO,  
NABILALA COMMUNITY DEVELOPMENT



## Site Analysis Update

### Behind-the-Scenes Progress In Our Ongoing Site Analysis

We've been updating you month by month as our consultant (BBS) is conducting a thorough site analysis, reviewing our properties and helping us think through how they can more effectively support our mission, purpose, and vision. As you've seen, we given BBS the feedback that came through our Conversation Circles and Leaders' Summit in February, and you glimpsed their initial work in our information sessions held in March.

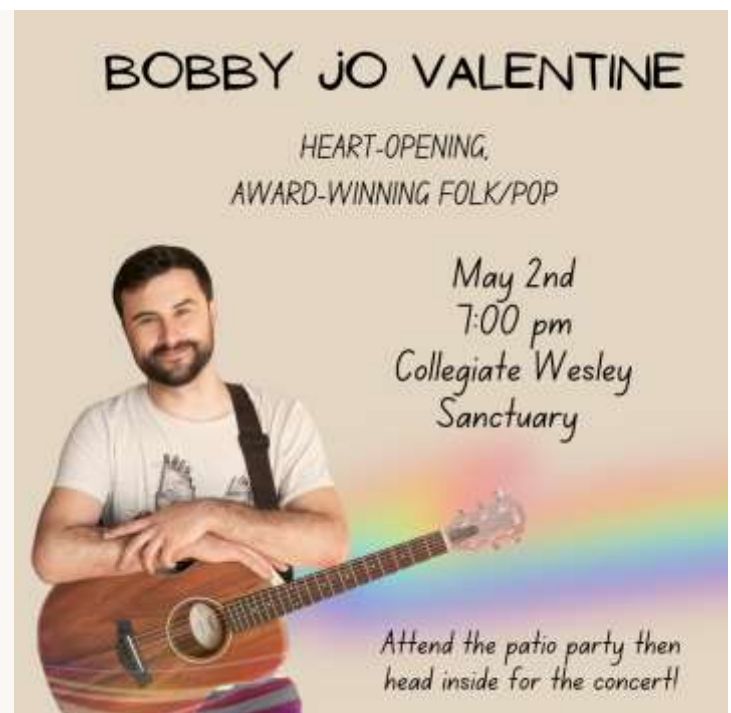


Our Site Analysis Oversight Team (SAOT) has continued its meetings with BBS and separately over the last several weeks. We've reviewed reports about the condition of our facilities and we've offered initial and further feedback on possible next steps which, each time, is allowing BBS to refine and focus the work that will eventually be shared out to our leaders and with the congregation. We're getting closer to that time, but we aren't there yet! **Stay tuned for more information** that will indeed be shared when the time is right.

In the meantime, please be praying for this process as we move toward being ready to make strategic decisions that will guide the future of Collegiate/Wesley and our care for our properties. Our SAOT members have invested a lot of time, attention, and intentionality in this work, so give us a shout-out when you have a chance: Jeff Elver, Max Morris, David Orth, Ann Sandine, Chris Strawhacker, and Pastor Lee. Thanks to all for your engagement in the process so far, and for your patience as we move closer to the stage of decision-making and implementation.

## Our Spring Social—Patio Party and Concert

We'll gather for fellowship, food, and folk/pop music on **Friday, May 2**, starting at 5:30 for our *Patio Party* and continuing in the sanctuary with a *Concert* featuring Bobby Jo Valentine, an award-winning songwriter and vocalist. It'll be fun for all ages, and a great time to bring a friend or connect with someone you haven't seen for a while. You can help us plan for numbers with an [RSVP at this link](#)!





# WESLEY CENTER



## 1,600 MEALS PACKED FOR ISU STUDENTS`

This Holy Thursday we gathered for a meal, communion, and to package food to go to SHOP (The Food Pantry for Iowa State). Through the faithful work of our volunteers we packaged 1,600 servings for SHOP and delivered them on-campus the following Monday. We are grateful for the many who got to participate and saddened by the increasing level of need on campus.

## WE NEED YOUR HELP TO DISTRIBUTE FINALS BREAKFAST

This finals week our church will be distributing breakfast on our sidewalk on Monday and Tuesday of finals week (see QR code below for details).



## WANT TO HELP WITH FINALS BREAKFAST?



## Our Prayers

- for Mary Beth, cousin of Nichole Hollinger, facing a recurrence of cancer and additional treatments.
- for the people of Gaza and the West Bank, Ukraine, and the U.S.
- for Rae, friend of LaRue Clark, who recently had knee surgery.
- for the family and friends of Julie Battistella, cousin of John Shriver, who died shortly after a cancer diagnosis.
- of thanks for the C/W crew that served at Food at First on Friday, March 28th: Dean Phillips, Sally Wilson, Bev Kruempel, Paul & Mary Ann Lundy, Dee Dreeszen, Marjy Howe, Michele Olsen, Alex Olsen, Abe & Amanda Winters, Steven Schroder, Annie, Abram, & Katherine Kerns, Lauren Loonsfoot, and Orville & Leah Berbano.
- for Carol Volker, recovering at home following a hospitalization at Mary Greeley Medical Center.
- for Elaine Johnson, in treatment for bone cancer.
- for Rochelle Ginder, hospitalized at Mary Greeley Medical Center.
- for Lindy Huisman, hospitalized at Mary Greeley.
- for our democracy.
- for Jeff Elver, as he continues to recover from surgery.
- for the people of Gaza and the West Bank, and for Ukraine.
- for Elaine Johnson, in treatment for bone cancer.
- of thanks for the special music in worship.
- for Eldon Weber, recovering from surgery.
- **for Pastor Lee's husband Dan, in treatment for pancreatic cancer. You can follow updates at this [Caring Bridge link](#).**
- For the Food at First crew on April 25: Dee Dreeszen, Bev Kruempel, Dean Phillips, Sally Wilson, Paul & Mary Ann Lundy, Marjy Howe, Steven Schroder, and Ann Sandine.
- Prayers with so many in our world who are grieving the death of Pope Francis. Here's [our Bishop's reflection](#) on his life and legacy.
- of joy, celebrating LaRue Clark's 96th birthday, which was on Easter Sunday.
- of joy, celebrating Avis Schroder's 10th birthday, which is today (April 24).



## Upcoming Funeral Services

We've lost a number of current and former church members in the last several months and have memorial services coming up. You may want to note them on your calendar:

Sunday, May 25, 1:00pm - Barb Gauger

Saturday, May 31, 10:00am - Marcos (Mark) Berbano

Saturday, June 28, 10:30am - Leona (Lee) Bergren





# Volunteer Opportunities and Donations Requested

## Little Food Pantry

Thank you to those who continue to give to the LFP! It is heartwarming to see the outpouring of donations in food, personal items and financial assistance.

**We couldn't do this mission without you.**

Personal items are always welcome! Remember – nonperishable only.

- Dry Pasta
- Peanut Butter
- Hot and/or cold cereals
- Knorr side dishes
- Ramen
- Granola bars
- Canned vegetables/fruits
- All personal items – shampoo, deodorant, soap, toilet paper, etc.

Please bring your donations directly to the **Little Food Pantry**, located outside the north door of the Annex or to the collection box inside the west door of the church. If you'd like to make a financial donation to the Little Food Pantry, please click [here](#). Thank you so much!



## Clothing That Works Needs Your Unused Clothing

CLOTHING THAT WORKS has been serving 50+ clients every week.

Come visit CTW any WEDNESDAY, 2-5pm or the first SATURDAY of each month 9am-noon. We will be happy to show you around.

Don't forget to donate your unneeded, adult-sized clothing. Donations can be delivered to CTW when they are open on Wednesdays and the first Saturday, or dropped off inside the west entrance of the church building.



## Food at First Volunteer Opportunity

We have the opportunity to prepare and serve the daily meal for Food at First on the fourth and fifth Friday of every month. There are two shift opportunities 3:30-5:30 AND/OR 5:30-7:30 pm. Early shift volunteers (we need 6 volunteers for this shift) work together on prepping the meal for the evening. Second shift volunteers (we need 10 volunteers for this shift) help serve the meal along with cleaning up following the meal.

**The next opportunities to serve are May 23 and 30.**

This is a great chance to build community, have fun, and serve others. To learn more, email Lauren Loonsfoot at [lauren@cwames.org](mailto:lauren@cwames.org) or sign up at [Food at First Volunteer](#).



Food at First is located inside First Christian Church, 611 Clark Ave., Ames

# Sending to Serve

## Live United Food Drive

Collegiate Wesley will be participating in the Story County United Way, Live United Food Drive. There will be a collection box in the West hallway from April 27th-May 8th. We invite you to bring non-perishables and help us fill the box! More details to come. The donations will help Food at First, SHOP, the ISU food pantry and more. In Story county 1 in 4 children are food insecure. These donations make a difference and the impact is great.



## Recent Food Insecurity Statistics

- **Nationally**, there are more than 41 million food insecure people which represents 13.5% of the population (Source: [Feeding America, 2022](#)).
- **10,090 Story County residents are food insecure**, representing 10.2% of the Story County population (Source: [Feeding America, 2022](#))
- **More than 1 in 4 children in Story County are eligible to receive free/reduced lunch (FRPL) on the basis of their family's income level.** In the 2023-2024 school year, 27.3% of all students in Story County schools were eligible for FRPL. In the 2024-2025 school year, 8 local schools had more than 40% of their students qualify! This is the highest level of food insecurity since United Way started tracking this data.
- **At Iowa State University, 31% of students are food insecure** (low to very low food security, fall 2021). In response, there are now 3 food pantries on campus (The SHOP at Beyer Hall, Bone Appetite at Vet Med, and Sloss Resource Room).
- **Story County has more than 20 food pantries to help address this need**, including pantries in the community, in faith-based organizations, at Iowa State, and in our local schools. Some of the larger pantries in Ames are open daily (ex/ MICA, The Salvation Army), while some of the smaller pantries are open once per week. (See a complete list at [www.uwstory.org/story-county-hunger-guide](http://www.uwstory.org/story-county-hunger-guide))
- **Monthly, thousands of individuals are served by emergency food pantries across Story County.** In fact, about 7,000 individuals are assisted at food pantries monthly, a volume that is unprecedented. (Sources: [UWSC Clear Impact Scorecard](#); UWSC ARPA emergency food program reports, internal use, 2022-2025)
  - o Pantry and free meal site visitors come from **every zip code** in Story County.
  - o Visitors are singles, households with children, and adults of every age.

## Women at the Well– Special Offering May

During the month of May we will be collecting special offerings for Women at the Well. We'd invite you to pray for Women at the Well and also consider making a monetary donation as well.

Women at the Well is a United Methodist congregation which is located within the walls of the Iowa Correctional Institution for Women, in Mitchellville, Iowa. We worship on Friday afternoons at 3:00 in the Sacred Space. We are a diverse community composed of women incarcerated at ICIW and many volunteers outside the walls who regularly support our ministries and programs. The worship service allows the women to share in the teachings of Jesus Christ, and to experience the life transforming Spirit of God. Collegiate Wesley is grateful for the opportunity to support Women at the Well through our gifts. To make a gift please visit [here](#) head to missions and mark your donation for Women at the Well.



## AMOS—When a Dream Lives

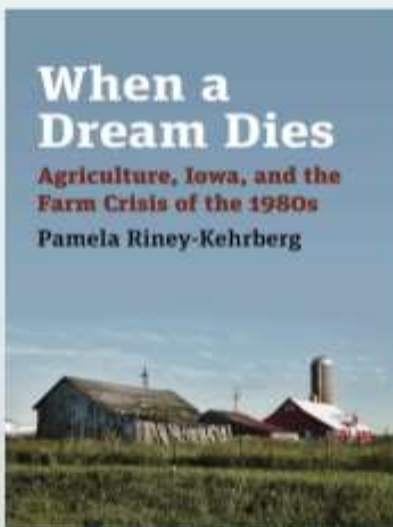
We invite you to join AMOS as we learn from our past to together create a new dream for our state! This statewide seminar with Iowa State University historian Pamela Riney-Kehrberg will focus on her book *When a Dream Dies: Agriculture, Iowa, and the Farm Crisis of the 1980s*. How does the 1980s Farm Crisis inform the challenges facing rural communities in 2025? How can we act together to address the pressures impacting Iowans today? [Register here](#) by May 23.

The day will include facilitated small group conversations to share experiences past and present, relationship-building opportunities with Iowans from across the state, and imagination about organizing to strengthen Iowa's small towns and families today. Would love to see you there! Questions? Contact Pastor Lee.



### **WHEN A DREAM LIVES** **Organizing to Build a Stronger Rural Iowa**

*Join AMOS and leaders in Iowa's small towns and farming communities as we learn from our past to together create a new dream for our state.*



This statewide seminar with Iowa State University historian Pamela Riney-Kehrberg will focus on her book *When a Dream Dies: Agriculture, Iowa, and the Farm Crisis of the 1980s*.

How does the 1980s Farm Crisis inform the challenges facing rural communities in 2025? How can we act together to address the pressures impacting Iowans today?

Join us to build relationships across geographic areas, share your own lived experiences (past and present), and act in solidarity to support rural Iowa families.

**Register by Friday, May 23**  
**[bit.ly/WhenADreamLives](https://bit.ly/WhenADreamLives)**

**Saturday, May 31**  
**9AM - 4PM (Lunch provided)**



**Iowa State University**  
**Scheman Building**  
**1805 Center Drive, Ames, IA**





You are Welcome Here!

Collegiate United Methodist Church and Wesley Foundation welcomes and affirms all persons without regard to gender, ethnic background, sexual orientation, national origin, age, physical or mental ability, marital status, economic condition, or anything **else which threatens to divide God's family.**

The purpose of C/W is to build an inclusive community that invites all people **to experience God's unconditional love, grow in faith, and serve others.**



2622 Lincoln Way  
Ames IA 50014  
[www.cwames.org](http://www.cwames.org)